



DURAGRAIN SURFACE FINISH

NEW. Aluminium entrance door ThermoSafe Decoral with matching decors

HÖRMANN

Duragrain

Contents



6 Concrete



8 Beige



9 Moca



10 Grigio



12 Grigio scuro



14 Rusty Steel



16 Burned Oak



18 Bamboo



19 Cherry



20 Spruce



21 Malt Oak



22 Nature Oak



23 Noce sorrento balsamico



24 Noce sorrento natur



26 Sapeli



28 Rusty Oak



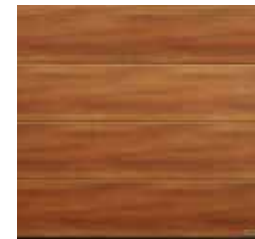
29 Sheffield



30 Used Look



32 Teak



34 Colonial Walnut



35 Terra Walnut



36 White brushed



37 White Oak



38 Whiteoiled Oak



40 Whitewashed Oak



Individual styles

Design your Duragrain door with your personal favourite style. To do this, simply upload your photo to www.hormann.co.uk/uk/home-owners-and-renovators/configurator or contact your Hörmann sales partner.

Matching garage doors and entrance doors

Aluminium entrance door ThermoSafe Decoral with matching Duragrain decors



MATCHING GARAGE DOORS AND ENTRANCE DOORS.

Is a particularly harmonious overall appearance important for your home? Then we have the perfect unit of garage door and entrance door for you here. Our LPU 42 sectional garage door with expressive L-ribbing and the ThermoSafe Decoral aluminium entrance doors in 18 door designs are available in five decors with a perfectly coordinated matching look. The garage door and entrance door fulfil sophisticated design preferences, both individually and in combination.



For further information, see the “Entrance doors and garage doors with a matching look” brochure.



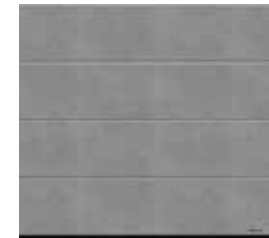
43 Barnwood .NEW



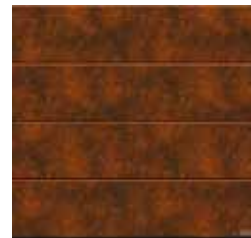
44 Barnwood grey .NEW



45 Wild Oak .NEW



46 Cement .NEW



47 Rusty Patina .NEW



Duragrain

Surface finish



Duragrain
Extremely scratch-resistant



FINAL DECOR COATING WITH HIGH-STRENGTH PROTECTIVE PAINT. The highly scratch-resistant and UV-resistant decor printing guarantees a permanently beautiful door appearance. The 30 decors are detailed, natural and colourfast. A harmonious, vibrant surface finish look is created by repeating the decor every 800 to 1300 mm (depending on the decor) and by offsetting the decor between the sections. Duragrain doors are generally supplied in Grey white, RAL 9002, on the inside of the door. When the door is opened, a thin grey-white stripe can be seen between the sections on the outside.

Door leaf construction

- 1 42 mm thick, double-skinned LPU steel sections with PU infill
- 2 Surface finish hot-galvanized on the interior and exterior
- 3 Sections primed on the interior and exterior in Grey white, RAL 9002
- 4 UV-resistant decor printing on the priming of the outside of the sections ensures a natural, colourfast decor appearance
- 5 The scratch-resistant final Duragrain coating provides the exterior of the decor with continuous protection against environmental effects, keeping the door beautiful for years to come



MATCHING APPEARANCE OF FRAMES AND DOOR LEAVES.

The harmonious appearance of a door is the result of many small details: The fascia panel **1** provided always matches the door sections. This ensures that everything fits together. The side frames **2** are available with a white Woodgrain surface finish as standard. With frame coverings **3** in the same surface finish and decor as the door section, you can enjoy a door appearance that is perfect in every detail.

Optionally, window frames, glazing profiles as well as frame profiles for side doors are available in an NCS colour matching the decor (see illustration **5** below and colour stripes with designation on the decor details pages from page 6) or in an individually selected RAL colour.

Decor detail view



- 4** Decor
- 5** Colour for optional equipment such as glazing profiles

Note

The colours and surface finishes shown are subject to the limitations of the printing process and cannot be regarded as binding. Please consult with your local Hörmann sales partner.

Concrete

Duragrain

S 3500-N





Beige

Duragrain

S 3502-Y





S 7005-Y20R

Grigio

Duragrain





S 4500-N

Grigio scuro

Duragrain

S 7500-N



Grigio scuro

Duragrain



Rusty Steel

Duragrain



Rusty Steel

Duragrain



S 7020-Y80R

Burned Oak

Duragrain

S 8010-Y10R



Burned Oak

Duragrain



Bamboo

Duragrain

S 4040-Y20R



Cherry

Duragrain



S 5040-Y70R

Spruce

Duragrain

S 3020-Y20R



Malt Oak

Duragrain



S 4020-Y30R

Nature Oak

Duragrain

S 3040-Y10R



Noce sorrento balsamico

Duragrain



S 6030-Y50R

Noce sorrento natur

Duragrain



Noce sorrento natur

Duragrain



S 5030-Y40R

Sapeli

Duragrain

S 7020-Y80R





Rusty Oak

Duragrain

S 6030-Y80R





S 3005-Y50R

Used Look

Duragrain





S 2005-Y20R

Teak

Duragrain

S 5030-Y30R



Colonial Walnut

Duragrain



S 5040-Y50R

Terra Walnut

Duragrain

S 8005-Y80R





White brushed

Duragrain

S 1500-N



White Oak

Duragrain



S 2000-N

Whiteoiled Oak

Duragrain



Whiteoiled Oak

Duragrain



S 4010-Y50R

Whitewashed Oak

Duragrain

S 3502-Y



Whitewashed Oak

Duragrain



Matching garage doors and entrance doors

Aluminium entrance door ThermoSafe Decoral with matching Duragrain decors



Barnwood

Duragrain



S 4040-Y30R

Barnwood grey

Duragrain

S 6005-Y20R



Wild Oak

Duragrain



S 4010-Y30R

Cement

Duragrain

S 4502-G



Rusty Patina

Duragrain



S 6030-Y50R



Experience Hörmann quality in new construction and modernisation

Hörmann products have impressive durability and high functionality. You can easily plan for new construction as well as modernisation. The carefully coordinated solutions make your home more beautiful, more secure and more comfortable.

**GARAGE DOORS. GATE AND DOOR
OPERATORS. ENTRANCE DOORS.
RESIDENTIAL INTERNAL DOORS.
STEEL DOORS. FRAMES.
STORAGE SPACE SYSTEMS.**

Some of the products shown are equipped with special equipment and do not always correspond to the standard versions. The surface finishes and colours shown are subject to the limitations of the printing process and cannot be regarded as binding. All rights reserved. No part may be reproduced without our prior permission. Subject to changes.

HÖRMANN