



SIDE SLIDING SECTIONAL DOORS

NEW. Elegant door handle with recessed grip
for easy operation from both sides and secure closing

HÖRMANN





4

Good reasons
to try Hörmann
sectional doors.



12

Inspirations.



20

Design.
Equipment.
Accessories.

Responsibility for generations

The Hörmann family business has over 85 years of experience as a construction component specialist. This gives us an obligation to both current and future generations. That's why environmental responsibility plays such an important role for us. With this in mind, we develop innovative solutions for sustainable products and intelligent environmental protection.



“A GOOD REPUTATION MUST BE EARNED.”

August Hörmann

In keeping with the tradition started by the company's founder, the Hörmann brand is a true promise of quality and, with sales of over 20 million doors and operators, is one of Europe's most successful suppliers. Due to the comprehensive international sales and service network, Hörmann is your strong partner for high-quality construction components.

AN EYE ON THE FUTURE. Hörmann is setting a good example. That's why 100% of our electricity needs in Germany come from green electricity. Together with an intelligent and certified energy management system, CO₂-neutral mailing and the recycling of valuable materials, more than 60000 tons of CO₂ are saved each year. In addition, we offset over 100000 tons of CO₂ by promoting wind energy and reforestation projects in cooperation with ClimatePartner.



You can find further information at
www.hoermann.com/en/sustainability



Brand quality made in Germany



The family-owned company Hörmann offers all important construction components for building and renovating projects from a single source. We manufacture in highly specialised factories using state-of-the-art production technologies. Our employees work intensively on new products, continual further developments and improvements to details. The results are patents and unique products on the market.





10-year warranty*

LONG-LASTING. GUARANTEED. All major door and operator components are developed and manufactured by Hörmann. Endurance tests under real conditions ensure mature series products with Hörmann quality. Thanks to this and uncompromising quality assurance, you receive a 10-year warranty on all Hörmann sectional doors and a 5-year warranty on Hörmann operators*.

* The complete warranty conditions can be found at: www.hoermann.com



Tested and certified

CERTIFIED SAFETY FOR YOU AND YOUR FAMILY.

Hörmann side sliding sectional doors are tested and certified in accordance with the high safety requirements of European standard 13241, not only on their own but also in combination with Hörmann operators. It would be hard to find a safer side sliding sectional door. And this provides you and your family with safety during daily use.



Discover the space you could save

In contrast to up-and-over doors, sectional doors and roller garage doors, side sliding sectional doors open to the side instead of upwards. This is particularly advantageous if, for example, the garage ceiling has to remain free to store items (such as surfboards), or the door leaf cannot be parked underneath or fitted to the ceiling due to construction reasons (a sloped roof, low headroom, obstructive drainpipes).





RELIABLE. Optimally shaped door section transitions and hinges prevent fingers from being accidentally trapped. The reliable automatic safety cut-out is active during both the opening and the closing cycle of the door. The door stops immediately if there is an obstacle in the opening zone or in the wall guide. This prevents injuries and damage to vehicles or property from the outset.



LOCKED. The elegant door handle with recessed grip **.NEW** ensures easy operation from both inside and outside. When closing, three hooks on the curve side and three security bolts on the closing side of the door leaf engage and firmly connect the door leaf to the side frame. On manually operated doors, a hook catch lock **.NEW** additionally secures the closing side.

→ For further information, see from page 32.



Only from Hörmann
Mechanical anti-lift kit in the operator boom

SECURE. On power-driven doors, the anti-lift kit automatically engages in the boom's stop when closing, locks immediately and is secured against forced opening.



Watch the video on YouTube or at www.hoermann.com/videos

Intelligent operating comfort

Hörmann operators convince with more convenience, smart functions and intelligent technology. Our elegant hand transmitters allow you to open your door from your car. Or you can simply use your smartphone as a door opener with the Hörmann BlueSecur app or the Hörmann homee Smart Home system.





CERTIFIED SECURITY. The bidirectional BiSecur radio system with particularly secure encryption protocol and stable, interference-free range makes sure that no one can copy your radio signal. This is also confirmed by the security experts of Bochum University and independent test institutes.

Only from Hörmann



Watch the video on YouTube or at www.hoermann.com/videos

Only from Hörmann

Wicket door function

WICKET DOOR FUNCTION. Side sliding sectional doors can also be opened partially to allow pedestrians to pass. This lets you get into your garage faster, for example if you want to get your bicycle out. The passage width can be individually set in doors with an operator. For example, to get a narrow passage for persons or a wider passage for bikes, motorcycles or wheelbarrows. The door is operated via the hand transmitter or the optional door handle with radio module.

→ For further information, see from page 32.

A brief actuation of the handle and the door automatically moves into the set position.



With the homee Smart Home system, you can control all door functions via your tablet or smartphone.





PLANAR SURFACE FINISH. The elegant surface finish in 6 exclusive Matt deluxe Hörmann colours meets all expectations of a modern door design. It impresses by combining a smooth surface finish with fine elegance and matt trendy colours.

→ Available as L-ribbed. For all colours and details, see from page 28.





SILKGRAIN SURFACE FINISH. Thanks to its elegant door appearance, this silky smooth surface finish is the first choice for modern architecture.

→ Available as L- and M-ribbed. For all colours and details, see from page 25.

TOP LEFT. L-ribbed design style 451 in Silkgrain, White aluminium RAL 9006

TOP RIGHT. Detail view of Silkgrain, White aluminium RAL 9006

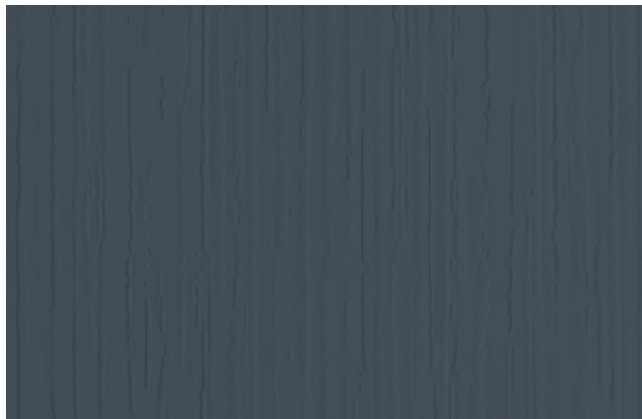
BOTTOM LEFT. Detail view of Planar, CH 7016 Matt deluxe Anthracite grey

BOTTOM RIGHT. L-ribbed Planar, CH 7016 Matt deluxe Anthracite grey



SLATEGRAIN SURFACE FINISH. Slate slabs are the model for this textured surface finish that gives your door a special look. Thanks to the slate structure, minor scratches can be easily repaired.

→ Available as L- and M-ribbed. For all colours and details, see from page 25.



TOP LEFT. Detail view of Slategrain, Slate grey RAL 7015

TOP RIGHT. L-ribbed, Slategrain, Slate grey RAL 7015

BOTTOM LEFT. M-ribbed, Woodgrain, Traffic white RAL 9016

BOTTOM RIGHT. Detail view of Woodgrain, Traffic white RAL 9016





WOODGRAIN SURFACE FINISH. On this inexpensive and robust surface with an authentic sawn timber look, minor scratches can be easily removed.

→ Available as L- and M-ribbed. For all colours and details, see from page 25.

MATCHCOLOR. NEW. Use matching colours for side sliding sectional doors, entrance doors, side doors and steel doors to design your home in perfect colour harmony.

→ Available for Woodgrain, Slategrain and Silkgrain surface finishes. For all colours and details, see from page 26.





TOP. M-ribbed, Basalt grey RAL 7012, aluminium entrance door ThermoSafe style 860, Basalt grey RAL 7012

BOTTOM. L-ribbed, Anthracite grey RAL 7016, aluminium entrance door ThermoSafe, style 860, Anthracite grey RAL 7016





DECOGRAIN SURFACE FINISH. The detailed surface finish is available in five natural-looking timber designs and with an anthracite metallic effect. Your door remains beautiful for a long time thanks to the special surface protection with UV-resistant plastic film coating on the outside of the steel sections.

→ Available as L- and M-ribbed. For all decors and details, see from page 29.



DURAGRAIN SURFACE FINISH. With this smooth door surface, you can choose from 25 detailed, natural and true-colour decors or, if you wish, have your door printed with an individual image. The final coating of high-strength protective paint is especially robust, scratch-resistant and stain-resistant. So your door can retain its flawless appearance for a long time to come.

→ Available as L-ribbed. For all decors and details, see from page 30.



TOP LEFT. Detail view of Decograin Golden Oak

TOP RIGHT. M-ribbed, Decograin Golden Oak

BOTTOM LEFT. Detail view of Duragrain Burned Oak

BOTTOM RIGHT. L-ribbed, Duragrain Burned Oak



22



24



36



Design. Equipment. Accessories.

- 22 Steel sectional doors
- 24 Surface finishes, colours, decors
- 32 Handles
- 33 Glazings and ventilation grilles
- 34 Standard equipment
- 36 Side doors
- 38 Operators
- 40 Accessories
- 42 Dimensions and fitting data

Steel sectional doors

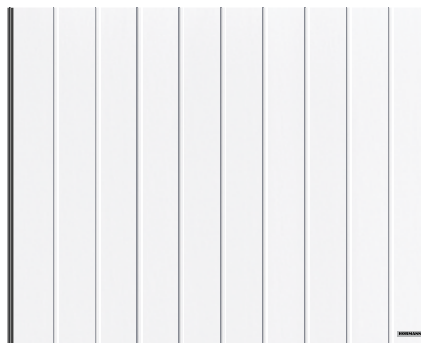
Door leaf version and door styles



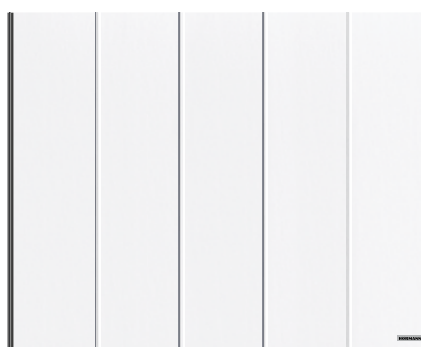
HST 42

- Good insulation and door travel properties
- Double-skinned 42 mm thick sections

Standard styles



M-ribbed, Traffic white RAL 9016



L-ribbed, Traffic white RAL 9016

Performance characteristics according to European standard 13241

Section material	Galvanized sheet steel with polyester-primer coating
Section thickness	Double-skinned, 42 mm
Thermal insulation U-value for fitted door	1.9 W/(m ² ·K) ¹⁾
Wind load ³⁾	Class 2
Air / water tightness	Class 2 / Class 2 ²⁾
Max. width	6500 mm
Max. height	3000 mm

Styles / surface finishes

M-ribbed	Woodgrain, Slategrain, Silkgrain, Sandgrain, Decograin
L-ribbed	Woodgrain, Slategrain, Silkgrain, Sandgrain, Planar, Decograin, Duragrain

¹⁾ The U-value applies to fitted doors without glazing with the dimensions 4300 x 3000 mm

²⁾ Up to 70 Pa water pressure

³⁾ Higher wind load classes on request

Styles with design elements



L-ribbed, Traffic white RAL 9016, design element style 451¹⁾



L-ribbed, Traffic white RAL 9016, design element style 469¹⁾



L-ribbed, Traffic white RAL 9016, design element style 461¹⁾



L-ribbed, Traffic white RAL 9016, design element style 481¹⁾

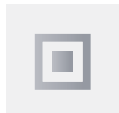
Design elements



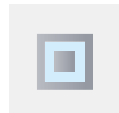
Style 451¹⁾



Style 461¹⁾



Style 452¹⁾



Style 462¹⁾



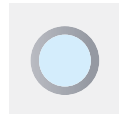
Style 471¹⁾



Style 481¹⁾



Style 459¹⁾



Style 469¹⁾



Style 472¹⁾



Style 482¹⁾



Style 473¹⁾



Style 483¹⁾



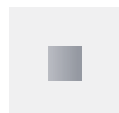
Style 453¹⁾



Style 463¹⁾



Style 456²⁾



Style 460²⁾



Style 454¹⁾



Style 455¹⁾



Style 474¹⁾



Style 475¹⁾

Glazing



Design element in brushed stainless steel



Real glass
Optional for styles
461 and 481



Design element painted in Anthracite grey RAL 7016 with synthetic glazing for styles 461, 462, 463, 469, 481, 482 and 483

¹⁾ 3 style pattern repetitions up to 2375 mm door height

²⁾ 4 style pattern repetitions up to 2375 mm door height

Matching appearance

For door leaf and frame

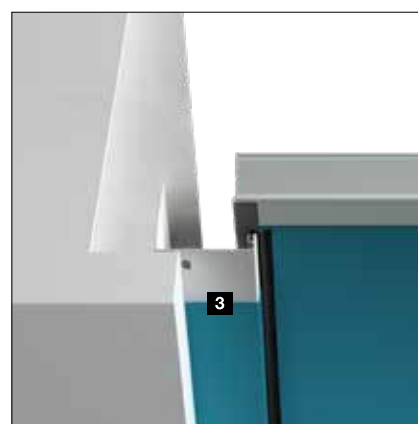
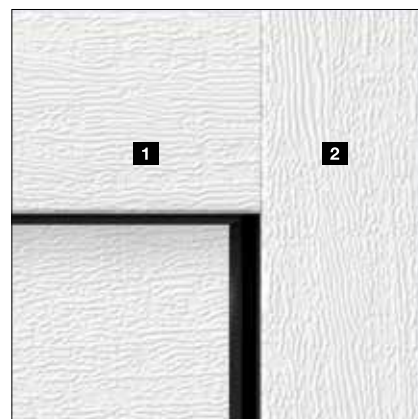


Door leaf, fascia panel and side frames matching in Woodgrain Traffic white RAL 9016

MATCHING APPEARANCE OF FRAMES AND DOOR LEAVES.

The harmonious appearance of a door is the result of many small details: The fascia panel **1** for the Woodgrain, Sandgrain, Silkgrain, Planar and Decograin surface finishes is always provided matching the door sections. This ensures that everything fits together.

The side frames **2** are available with a white Woodgrain surface finish as standard. With frame coverings **3**, the side frames can be easily adapted to the surface finish of the sections.



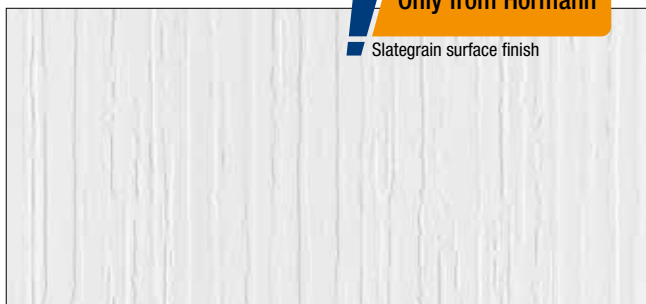
	Woodgrain	Slategrain	Silkgrain	Sandgrain	Planar	Decograin	Duragrain
Fascia panel 1	●	○	●	●	●	●	□
Side frame 2	●	■	■	■	■	■	■
Frame covering 3	●	●	●	●	●	●	□

- = Identical surface, colour or decor as door section
- = Woodgrain surface finish in Traffic white RAL 9016 (in Grey white RAL 9002 for the Premium version)
- = Smooth surface in same colour as door section
- = Smooth surface in a colour matching the door section or in RAL to choose

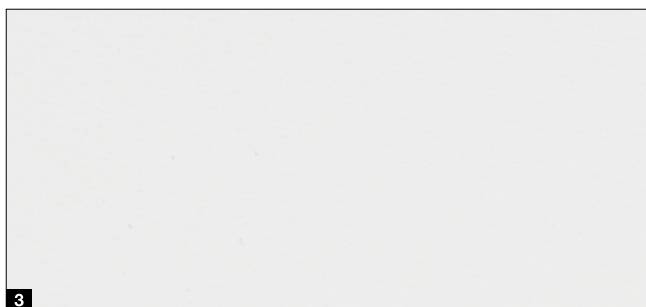
Woodgrain



Slategrain



Silkgrain



- 1 Woodgrain RAL 9016 Traffic white
- 2 Slategrain RAL 9016 Traffic white
- 3 Silkgrain RAL 9016 Traffic white

Protective coatings for a long, beautiful door appearance

Final coating. The surface finish of the sections is especially robust, scratch-resistant and stain-resistant thanks to the protective paint.

Final coating "Anti-graffiti". Due to the protective paint on the surface of the section as well as on glazings, design elements, etc., graffiti can be removed with a commercially available special cleaner.

→ Available for Woodgrain, Slategrain and Silkgrain surface finishes.



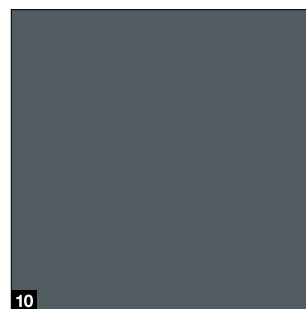
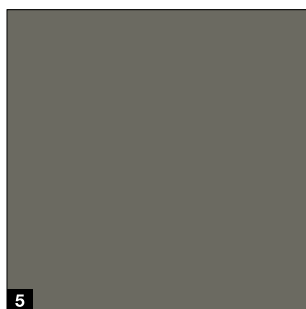
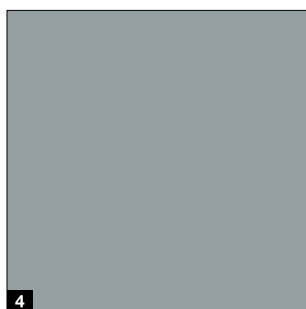
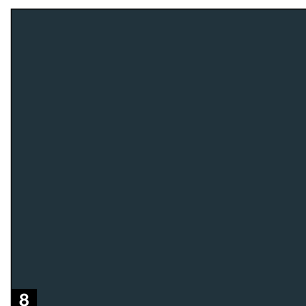
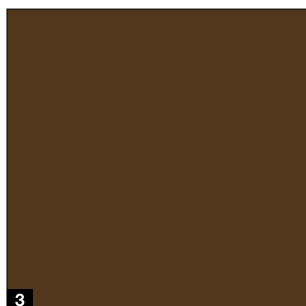
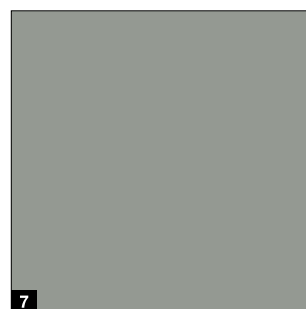
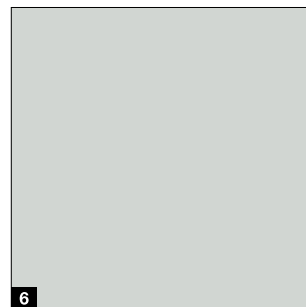
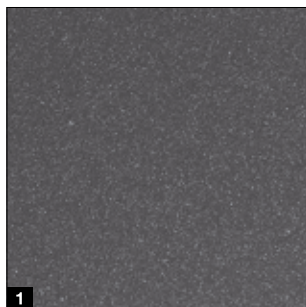
- 1 Double-skinned section
- 2 Galvanisation
- 3 Polyester-primer coating
- 4 Final coating or "Anti-graffiti" final coating

Preferred colours

For the Woodgrain, Slategrain and Silkgrain surface finishes



MatchColor .NEW



MatchColor

MatchColor .NEW

Design your home in perfect colour harmony – with the MatchColor preferred colours for side sliding sectional doors, entrance doors, side doors and sheet steel doors with a matching appearance. Enjoy the harmonious overall appearance thanks to matching colours. That is Hörmann brand quality!

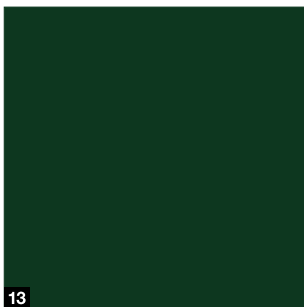
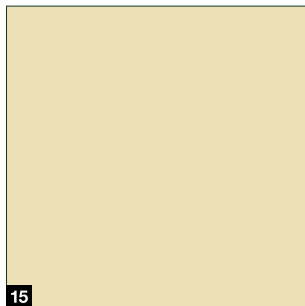
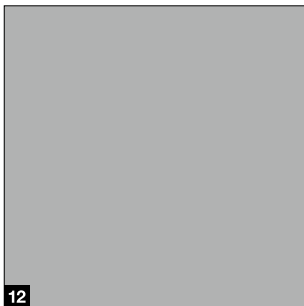
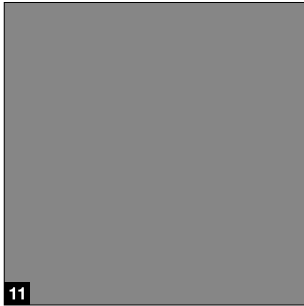
Tip

The smooth Silkgrain surface harmonises particularly well with the entrance door surfaces.

Please note:

Matching appearance of side sliding sectional doors, entrance doors, side doors and steel doors cannot be guaranteed in conjunction with an optional final coating or an "Anti-graffiti" final coating.

Color



MatchColor .NEW

- 1 CH 703 Anthracite metallic
- 2 RAL 9005 Jet black
- 3 RAL 8028 Terra brown
- 4 RAL 7040 Window grey
- 5 RAL 7039 Quartz grey
- 6 RAL 7035 Light grey
- 7 RAL 7030 Stone grey
- 8 RAL 7016 Anthracite grey
- 9 RAL 7015 Slate grey
- 10 RAL 7012 Basalt grey

Color

- 11 RAL 9007 Grey aluminium
- 12 RAL 9006 White aluminium
- 13 RAL 6009 Fir green
- 14 RAL 6005 Moss green
- 15 RAL 1015 Light ivory

RAL to choose

The Woodgrain, Slategrain and Silkgrain surface finishes are optionally available in around 200 RAL Classic colours (with the exception of pearl-effect and fluorescent colours) as well as in many NCS and DB colours.

Please note:

Side sliding sectional doors are generally supplied in Grey white, RAL 9002, on the inside of the door. Dark colours should not be used for double-skinned steel doors that are exposed to the sun, as possible section deflection may damage the door. All colours based on RAL. The colours and surface finishes shown are subject to the limitations of the printing process and cannot be regarded as binding.

Please consult with your local Hörmann sales partner.

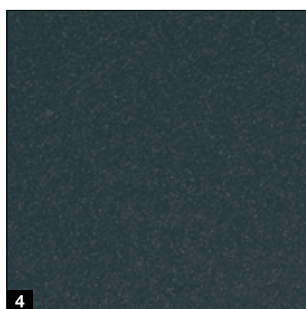
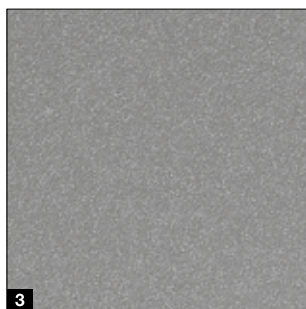
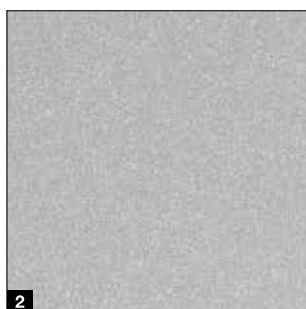
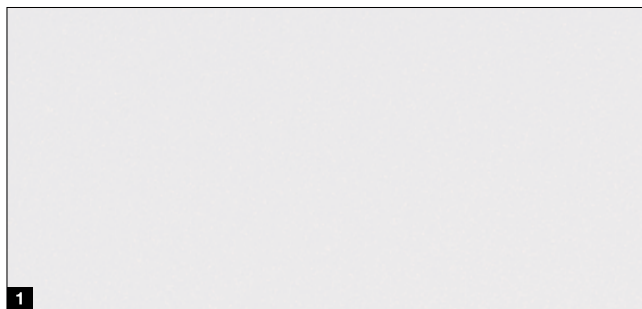
Surfaces

Sandgrain, Planar, Decograin

Sandgrain



Planar



Decograin



Sandgrain standard colour

- 1 RAL 9016 Traffic white

Sandgrain preferred colour

- 2 RAL 7016 Anthracite grey



Planar standard colour

- 1 CH 9016 Matt deluxe Traffic white

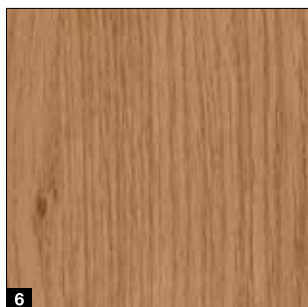
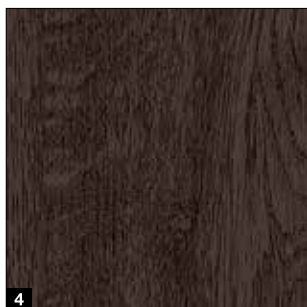
Planar preferred colours

- 2 CH 9006 Matt deluxe White aluminium
- 3 CH 9007 Matt deluxe Grey aluminium
- 4 CH 7016 Matt deluxe Anthracite grey
- 5 CH 8028 Matt deluxe Terra brown
- 6 CH 703 Matt deluxe Anthracite metallic



Decograin decors

- 1 Titan Metallic CH 703: anthracite with a metallic effect
- 2 Golden Oak: medium brown, golden yellow oak decor
- 3 Dark Oak: walnut-coloured oak decor
- 4 Night Oak: dark, intense oak design
- 5 Rosewood: mahogany-coloured timber design
- 6 Winchester Oak: natural-coloured knotty oak decor



Please note:

Side sliding sectional doors are generally supplied in Grey white, RAL 9002, on the inside of the door. Dark colours should not be used for double-skinned steel doors that are exposed to the sun, as possible section deflection may damage the door. All colours based on RAL. The colours and surface finishes shown are subject to the limitations of the printing process and cannot be regarded as binding. **Please consult with your local Hörmann sales partner.**

Surface finish

Duragrain



Duragrain
Extremely scratch-resistant

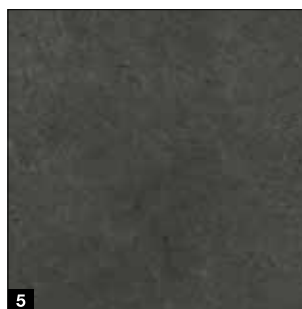
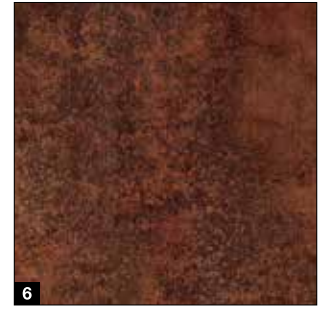
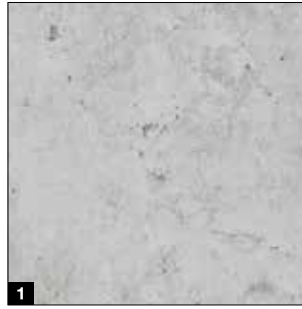
Scratch-resistant and stain-resistant

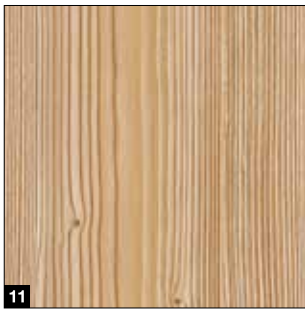
The innovative digital printing process in combination with the final high-strength protective paint coating is only available from Hörmann. This is the basis for a permanently beautiful door appearance. For Duragrain doors, we optionally supply the frame covering and the panels in a colour that matches the decor.



- 1 Double-skinned section
- 2 Galvanisation
- 3 Priming
- 4 Innovative digital print
- 5 Final coating with high-strength protective paint

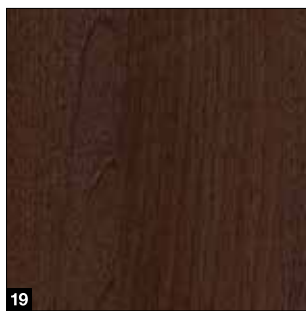
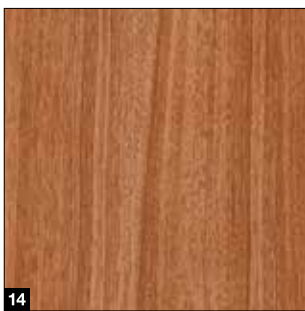
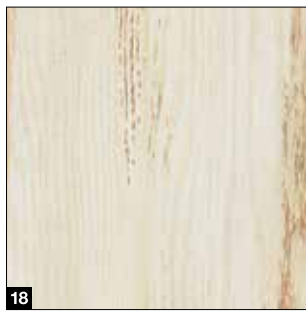
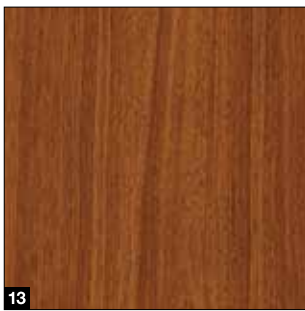
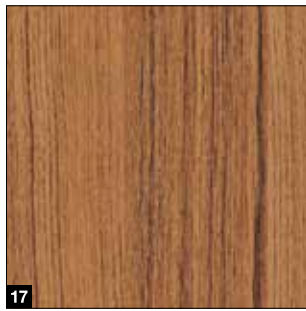
Duragrain





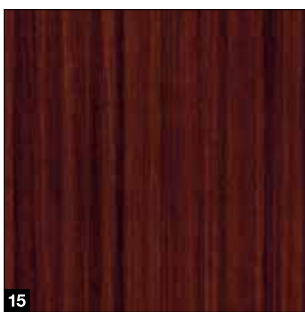
Duragrains decors

- 1** Concrete
- 2** Beige
- 3** Moca
- 4** Grigio
- 5** Grigio scuro
- 6** Rusty Steel
- 7** Bamboo
- 8** Burned Oak
- 9** Cherry
- 10** Nature Oak
- 11** Spruce
- 12** Rusty Oak
- 13** Noce sorrento balsamico
- 14** Noce sorrento natur
- 15** Sapeli
- 16** Sheffield
- 17** Teak
- 18** Used Look
- 19** Terra Walnut
- 20** Colonial Walnut
- 21** White brushed
- 22** White Oak
- 23** Whiteoiled Oak
- 24** Whitewashed Oak
- 25** Malt Oak .NEW



Individual styles

Design your Duragrains door with your personal favourite style. For this, simply upload your photo at www.hoermann.de/konfigurator or contact your Hörmann sales partner.



Handles

For internal and external operation

Handles



As standard, side sliding sectional doors are delivered without a door handle. The optional door handles are positioned vertically on the door leaf and are equipped with profile cylinder, security rose escutcheon, drill-proofing and core pull-off protection. In addition, you can receive the cylinder with a knob on the inside on request. The elegant door handle with recessed grip **.NEW** ensures easy operation from both inside and outside. For a harmonious door appearance, you can choose from three colours for the outer shell.

Cast metal outer shell in three colours

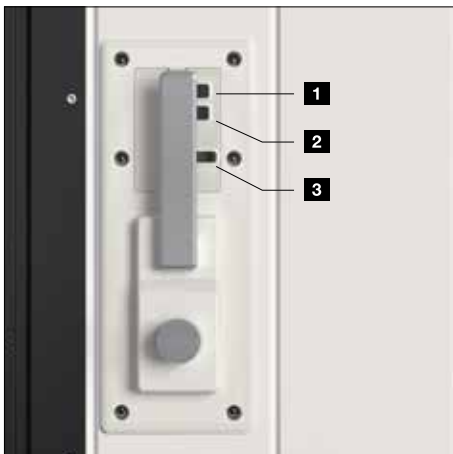
- 1 Traffic white RAL 9016
- 2 Jet black RAL 9005
- 3 Stainless steel look



For manually operated doors:

Door handle with hook catch lock **.NEW**

The hook catch engages when the door is closed and locks the closing side.



For doors with operator:

Door handle incl. convenient wicket door function

Two buttons and a sliding switch on the interior side of the handle allow you to:

- 1 Completely open and close the door
- 2 Operate the wicket door function
- 3 Switch off the radio signal (away setting)

Glazings and ventilation grilles

For more light and improved ventilation

Glazing variants



The glazings for the top door area are available with a synthetic double pane, either clear or crystal structure. The frames are white as standard and can optionally be delivered in the colour of the door or in RAL to choose.

Glazing

- 1 Glazing S0
- 2 Glazing S1
- 3 Glazing S2
- 4 Synthetic double pane, clear
- 5 Synthetic double pane, crystal structure

Ventilation grilles



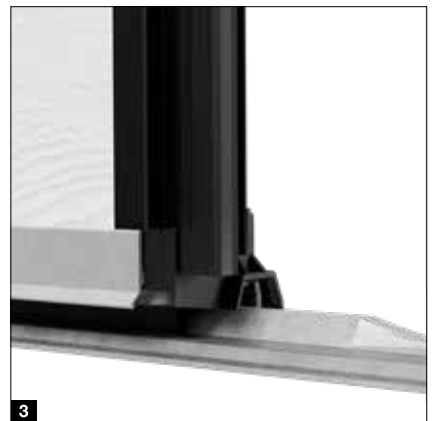
The ventilation grilles in the bottom part of the door are available in black as standard, and optionally in the colour of the door or in RAL to choose.

Ventilation grilles

- 6 Ventilation cross section 40 cm² / grille

Standard equipment

For a secure and long-lasting door function





Precise door travel

Twin rollers **1** made of wear-resistant plastic move reliably and precisely on the aluminium rail and prevent the door sections from jumping out. Additionally, they ensure smooth and easy door travel, making it a breeze to operate the door by hand as well. Stable connecting hinges on the rollers and between the sections ensure high door leaf stability.

Perfectly guided and well-sealed

The bottom aluminium floor rail **2** reliably guides the door sections and prevents the sections from swivelling out. The flat design allows barrier-free access.

Thanks to its continuous bottom seal **3** the side sliding sectional door impresses with class 2 water tightness and air permeability. This makes the door well-sealed against penetrating rainwater and leaves. The garage is kept cleaner for longer which means it must be cleaned less often. In addition, the risk of accidents by slipping is reduced.

Securely locked

The bottom and top door guides close the door precisely. Three additional hooks on the curve side **4** and three security bolts on the closing side **5** of the door firmly connect the door leaf ends to the side frame. Furthermore, these mechanical security devices virtually prevent the door from being forced open.

Easy fitting

The frame of the side sliding sectional door can be easily screwed together and can subsequently be fastened completely to the garage wall. Fitting in tight areas with only 140 to 450 mm sideroom is made possible with the DS track application **6** with double side booms.



Side doors

Garage side doors NT 60

Door sizes*

- Width (single-leaf) 990 – 1115 mm
- Width (double-leaf) 1130 – 3000 mm
- Height (single- / double-leaf) 1990 – 2183 mm

Leaf frame

- Wide version (profile type 4)

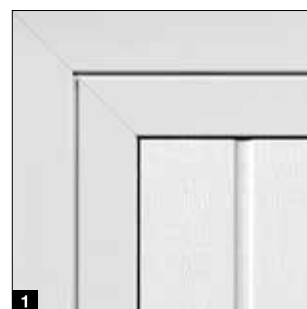
Standard equipment

- 60 mm thick weather-resistant aluminium profiles in the colour of the sections or, in the case of Duragrain infills, in a colour matching the decor **1**
- Traffic leaf with black plastic lever handle set with oval rose escutcheons and profile cylinder lock **2**
- 3-way adjustable hinges optionally in black, white or aluminium natural finish **3**



Optional equipment

- Lever handle or lever / knob handle sets in aluminium natural finish **4**, cast aluminium RAL 9016 **5**, brown cast aluminium **6**, brushed stainless steel **7**
- Concealed hinges for an elegant door appearance in the version with aluminium block frame **8**
- Fixed bolt for locking the fixed leaf with double-leaf side doors **9**
- Break-in-resistant RC 2 security equipment with 3-point-locking (latch, bolt, 2 locking hooks) and security rose escutcheon **10**
- Double-leaf side doors with asymmetrical division (not shown)



* depending on leaf frame version



MZ Thermo65 multi-purpose door

Steel side doors with thermal break

- 65 mm thick door leaf with thermal break and PU rigid foam infill
- Aluminium block frame with thermal break and threshold with thermal break
- High thermal insulation with a U-value = 0.82 W/(m²·K)
- Optionally available in an RC 2 version as KSI Thermo46 with 46 mm thick door leaf



For further information, see the "Steel doors" brochure.

Operators

SupraMatic 4

Supra-fast door opening and smart additional functions

- 40% faster opening speed* up to 20 cm/s
- Smart operation with the BlueSecur app
- Convenient garage ventilation
- Additional opening position
- Up to 3 times (SupraMatic E) or 5 times* (SupraMatic P) brighter LED lighting
- Easy-to-use programming thanks to 2 x 7-segment display
- High-quality stainless steel operator cover
- Networked with Smart Home systems via the standard HCP interface
- Low power consumption in standby below 1 watt



BiSecur

Standard 4-button hand transmitter HSE 4 BS, textured surface black with chrome caps

Garage door operators	SupraMatic E	SupraMatic P
Bluetooth receiver	Integrated, can be switched on and off	Integrated, can be switched on and off
HCP bus connection	Integrated	Integrated
Cycles per day / hour	25 / 10	50 / 10
Pull and push force	650 N	750 N
Peak force	800 N	1000 N
Max. opening speed	20 cm/s	20 cm/s
Lighting	20 LEDs	30 LED chase light
Max. door width	6000 mm	6500 mm
Max. door surface	13.75 m ²	15 m ²

* In comparison with the ProMatic series 3

Only from Hörmann
European patent

Hörmann BlueSecur



Operation by smartphone using the Hörmann BlueSecur app

Premium quality at an attractive price

- 20% faster opening speed* up to 17 cm/s
- Convenient garage ventilation
- Additional opening position
- Up to 2 times* brighter LED lighting
- Networked with Smart Home systems via the standard HCP interface
- Low power consumption in standby below 1 watt



 **BiSecur**

4-button hand transmitter HSE 4 BS, black textured surface with plastic caps as standard

Garage door operators

ProMatic 4

Bluetooth receiver	Optional (HET-BLE)
HCP bus connection	Integrated
Cycles per day / hour	25 / 10
Pull and push force	600 N
Peak force	750 N
Max. opening speed	17 cm/s
Lighting	10 LEDs
Max. door width	5000 mm
Max. door surface	11.25 m ²

Accessories

Hand transmitter



HS 5 BS
4 button functions, plus query button, high-gloss surface black or white



HS 5 BS
4 button functions, plus query button, textured surface matt black



HS 4 BS
4 button functions, textured surface matt black



HS 1 BS
1 button function, textured surface matt black



HSE 1 BS
1 button function, including eyelet for key ring, textured surface matt black



HSE 4 BS
4 button functions, incl. eyelet for key ring, textured surface matt black with chrome or plastic caps



HSE 4 BS
4 button functions, incl. eyelet for key ring
High-gloss surface with chrome caps, colours (shown from left): White, Anthracite grey, Frozen grey, Classic grey, Carbon, Silver



HSD 2-C BS
High-gloss chrome, 2 button functions, can also be used as a key ring



HSZ 1 BS
1 button function, for insertion in vehicle cigarette lighter



Hand transmitter station
In high-gloss surface black or white, textured surface matt black, for HS 5 BS, HS 4 BS, HS 1 BS



Hand transmitter holder
For wall fitting or fastening to the sun visor of a car, transparent, for HS 5 BS, HS 4 BS, HS 1 BS as well as HSE 1 BS and HSE 4 BS

→ The complete range of accessories can be found in the door operators and Smart Home systems brochure.



**Radio code switch
FCT 3 BS**
3 functions, with illuminated buttons, recessed or surface-mounted fitting possible, plastic housing in Light grey 7040 (also available with 10 functions and hinged cover, painted in White aluminium RAL 9006)



**Radio code switch
FCT 10 BS**
10 functions, with illuminated buttons and hinged cover, recessed or surface-mounted fitting possible, plastic housing painted in White aluminium RAL 9006



**Radio finger-scan
FFL 25 BS**
2 functions and up to 25 fingerprints, with hinged cover, recessed and surface-mounted fitting possible, plastic housing painted in White aluminium RAL 9006



**Radio internal push button
FIT 5 BS**
4 button functions plus query button, plastic housing in Pure white RAL 9010

Button



**Radio internal push button
FIT 2-1 BS**
2 functions, connection option for max. 2 control elements via cable, e.g. key switch, plastic housing in Pure white RAL 9010



**Internal push button
IT 1b-1**
Large, illuminated button for convenient opening of the door, plastic housing in Pure white RAL 9010



**Transponder key switch
TTR 1000-1**
1 function, 1000 teachable keys, scope of delivery: 1 key and 1 card (more on request), zinc die-cast housing in White aluminium RAL 9006



**Code switch
CTP 3-1**
3 functions, with illuminated lettering and touch-sensitive black surface, zinc die-cast housing in White aluminium RAL 9006



Code switch CTV 3-1
3 functions, particularly robust with metal keypad, zinc die-cast housing in White aluminium RAL 9006 with stainless steel panel



Finger-scan FL 150
2 functions, control via fingerprint, up to 150 savable fingerprints, zinc die-cast housing in White aluminium RAL 9006 with stainless steel panel



Key switch
1 STUP 50
2 STAP 50
Recessed version and surface-mounted version, incl. 3 keys, zinc die-cast housing in White aluminium RAL 9006 with stainless steel panel



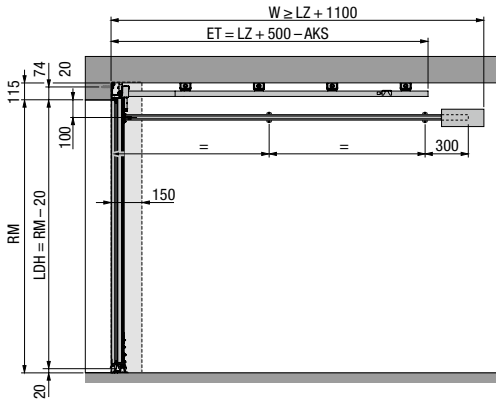
Internal climatic sensor HKSI **3**
For monitoring humidity and automatic ventilation of the garage, plastic housing in Pure white RAL 9010
External sensor HKSA **4**
For measuring outdoor humidity, plastic housing in Pure white RAL 9010

Dimensions and fitting data

HST 42

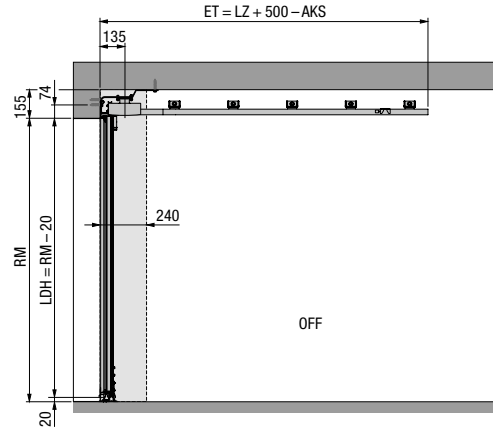
Operator wall fitting

Vertical view



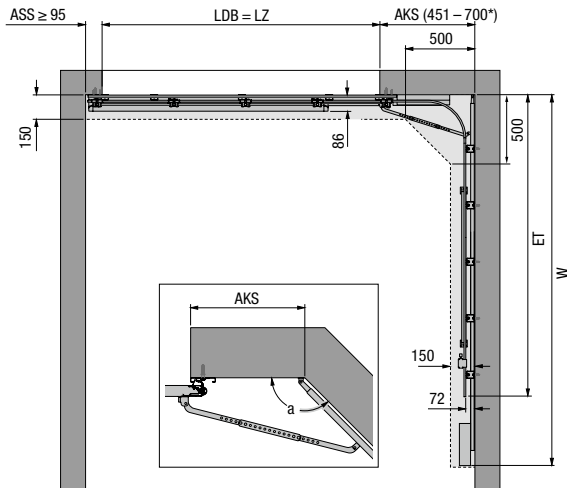
Operator ceiling fitting

Vertical view



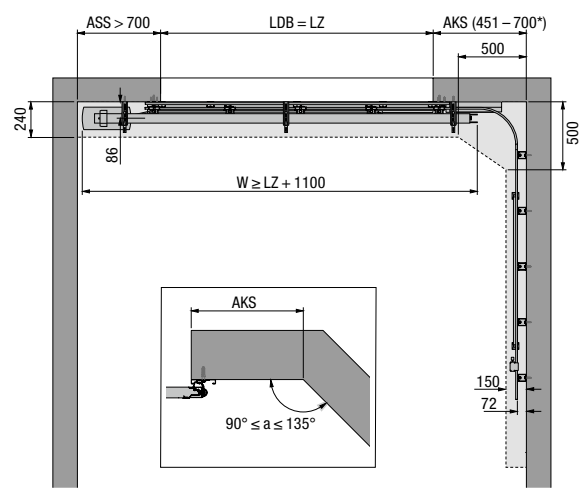
Track application ES (single track, operator wall fitting)

Horizontal view



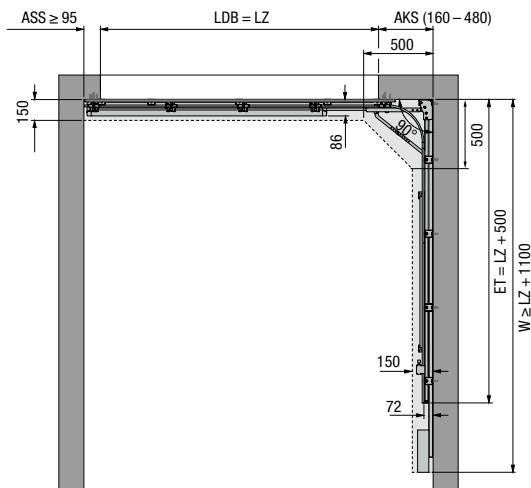
Track application ES (single track, operator ceiling fitting A)

Horizontal view



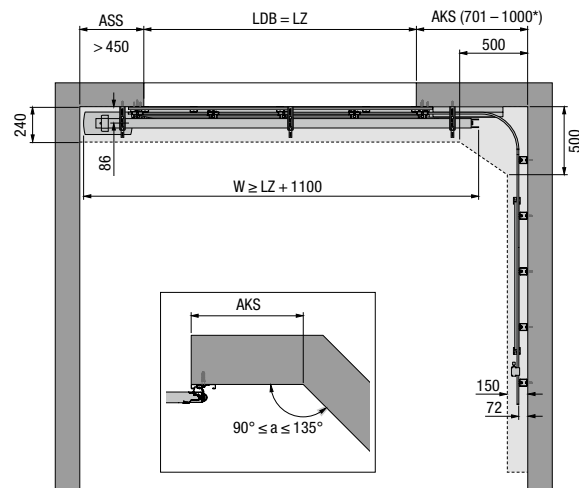
Track application DS (double track, operator wall fitting)

Horizontal view



Track application ES (single track, operator ceiling fitting B)

Horizontal view



Experience Hörmann quality in new construction and modernisation

Hörmann construction components are meticulously matched to each other and have impressive durability and high functionality. You can easily plan for new construction as well as modernisation and obtain premium products that will make your home not only more beautiful, but also more convenient and secure.

GARAGE DOORS. GATE AND DOOR OPERATORS. ENTRANCE DOORS. RESIDENTIAL INTERNAL DOORS. STEEL DOORS. FRAMES. STORAGE SPACE SYSTEMS.



Some of the products shown are equipped with special equipment and do not always correspond to the standard versions. The surface finishes and colours shown are subject to the limitations of the printing process and cannot be regarded as binding. All rights reserved. No part may be reproduced without our prior permission. Subject to changes.